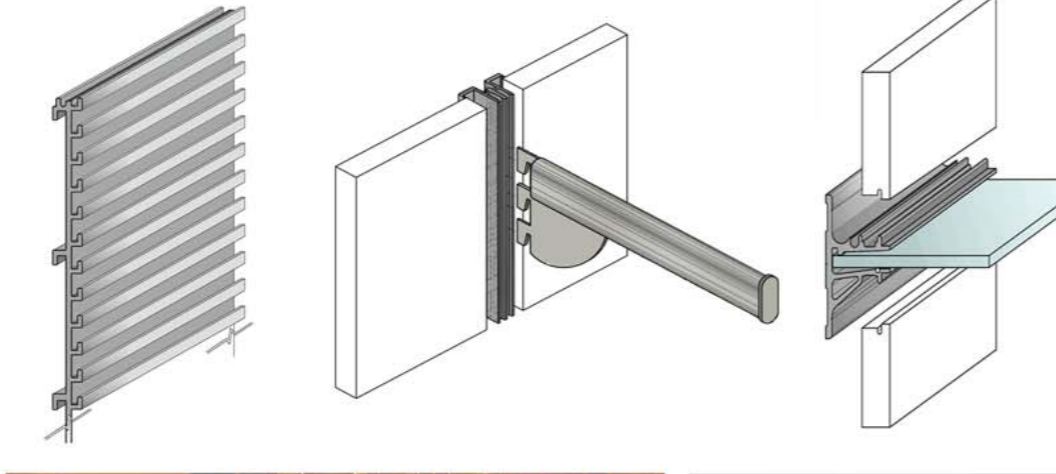
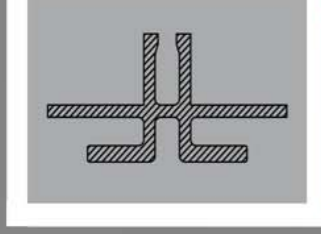
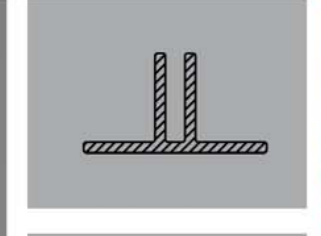
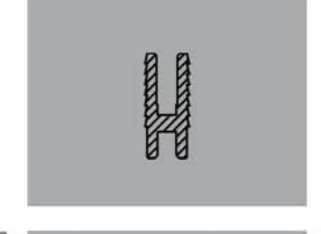
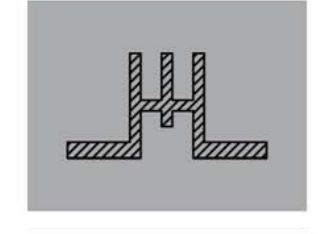
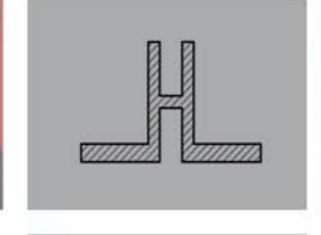
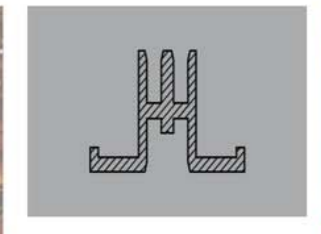
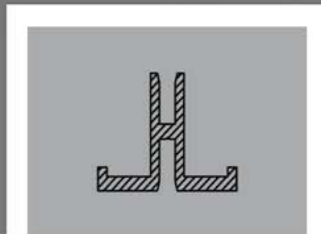
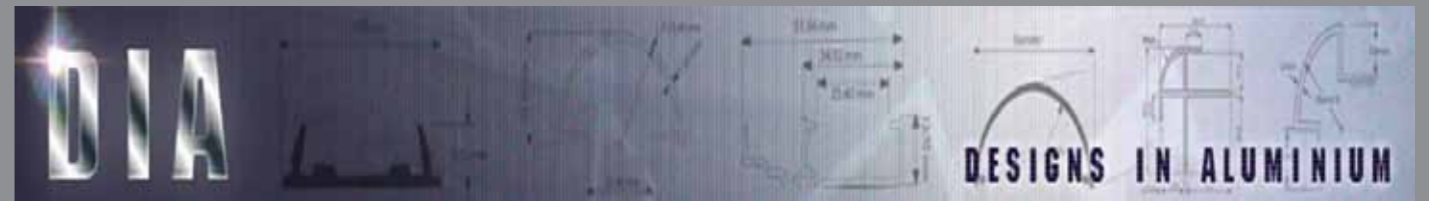


www.d-i-a.net
info@d-i-a.net

Specialising in Systems for the Retail Industry...

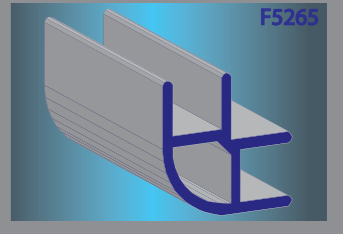
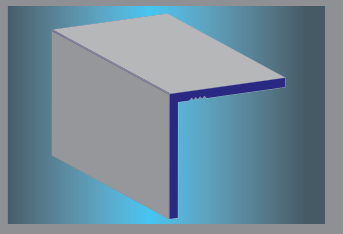
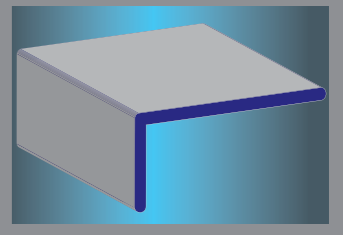
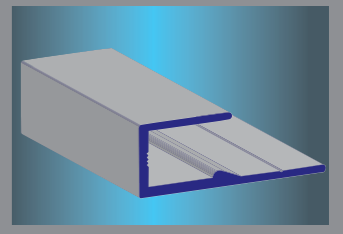
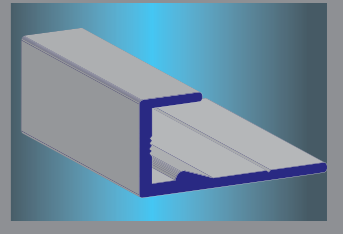
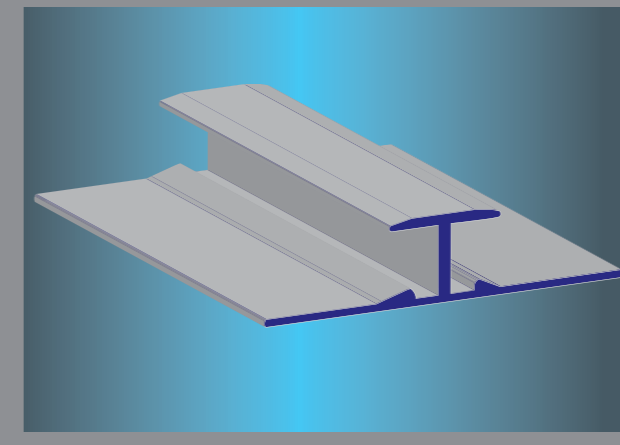
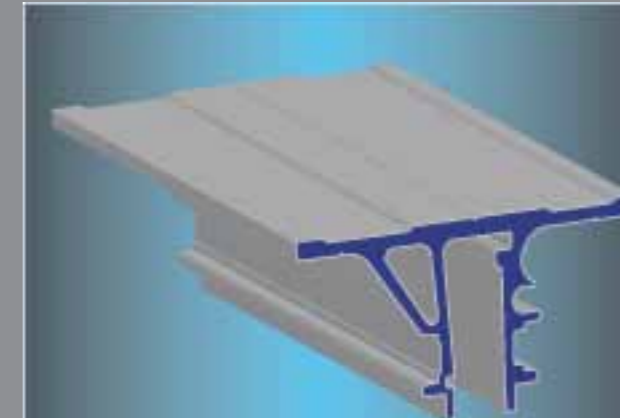
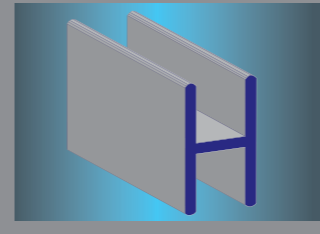
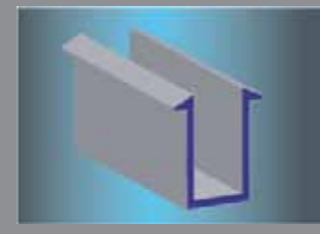
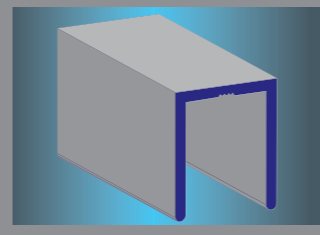
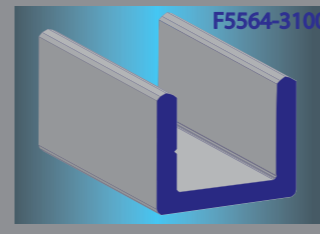
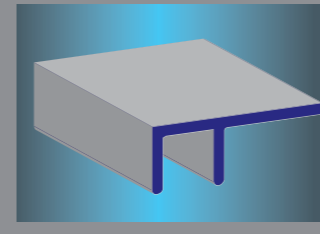


From concept to finished product



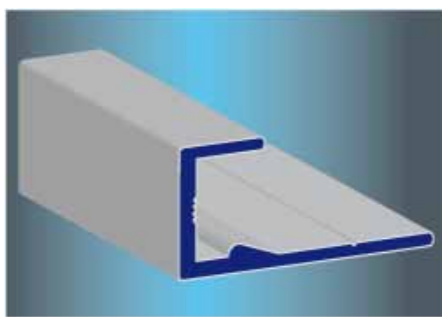
www.d-i-a.net

Aluminium Extrusions for Glass

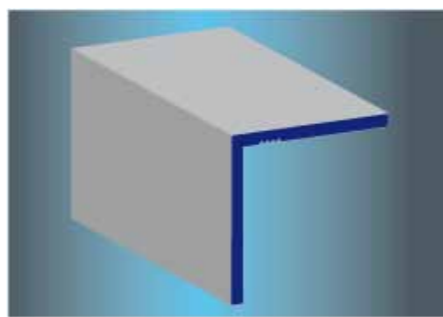


FREEPHONE 0800 783 1073 FAX 01273 580 644

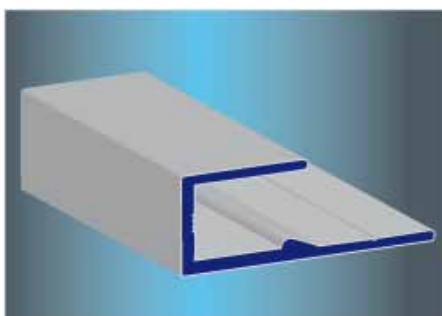
Dimensional Drawings can be found on our WEB site: www.d-i-a.net



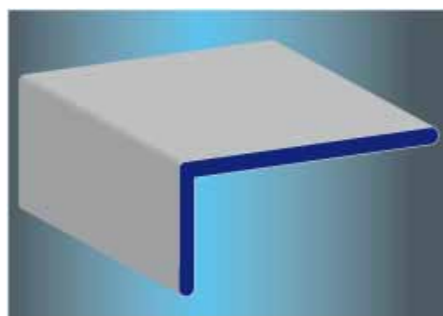
F5572-3100
"J"SectionTopMirrorTrimEtchedorPolished"



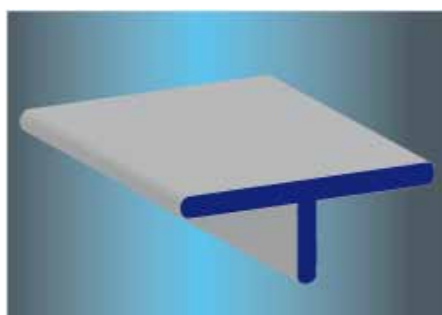
F2685-3100
"EqualAngle 16x16mm 1.2mm Gauge"



F5569-3100
"J"Sectionfor6mmGlassEtchedorPolished"



F5565-3100
"UnequalAngle 16x8mm 1.6mm Gauge"



F5589-3100
"Tee Section"

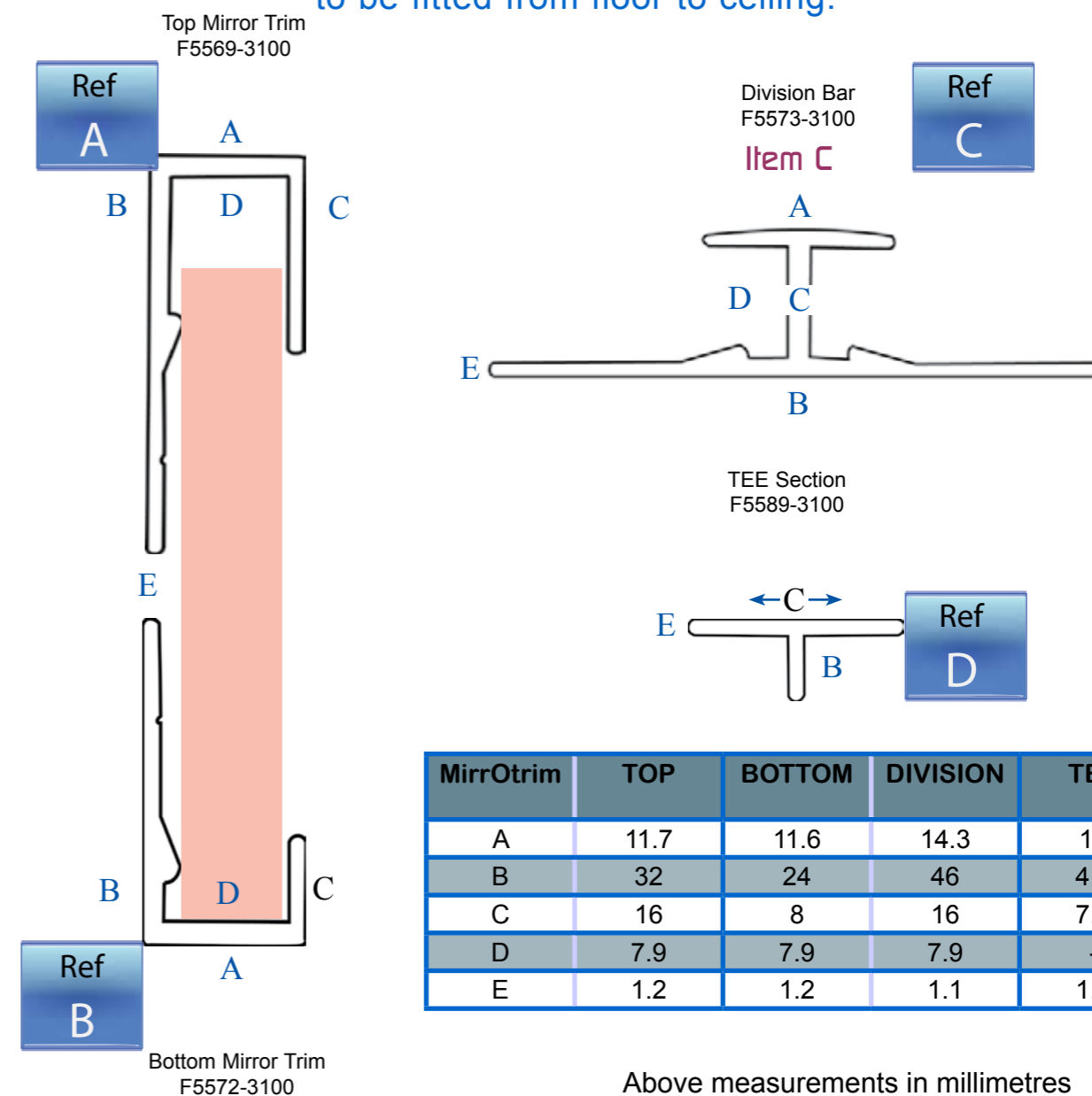
We hold stock in 3100mm lengths
Anodised Satin Etch and Polished Natural
Other colours to order
Limited stock in Bronze /Black or Gold

A Range of Aluminium Sections designed to support 6mm Mirror without the need of glue or to drill the Mirror.

How it Works

The Top and Bottom Trims have been especially designed to enable the Mirror to be lifted into the top trim and lowered into the bottom trim. The Division Bar which can be fixed adds strength to the structure as well as hiding Mirror joints. The ridge on the back of the Top, Bottom and Division Bar Sections prevents screw heads from damaging the back of the Mirror. The T section is designed to be decorative, hiding the Mirror edges. This needs to be glued into place with the use of Mirror Glue.

The MirrOtrim option allows for Mirrors to be fitted from floor to ceiling.

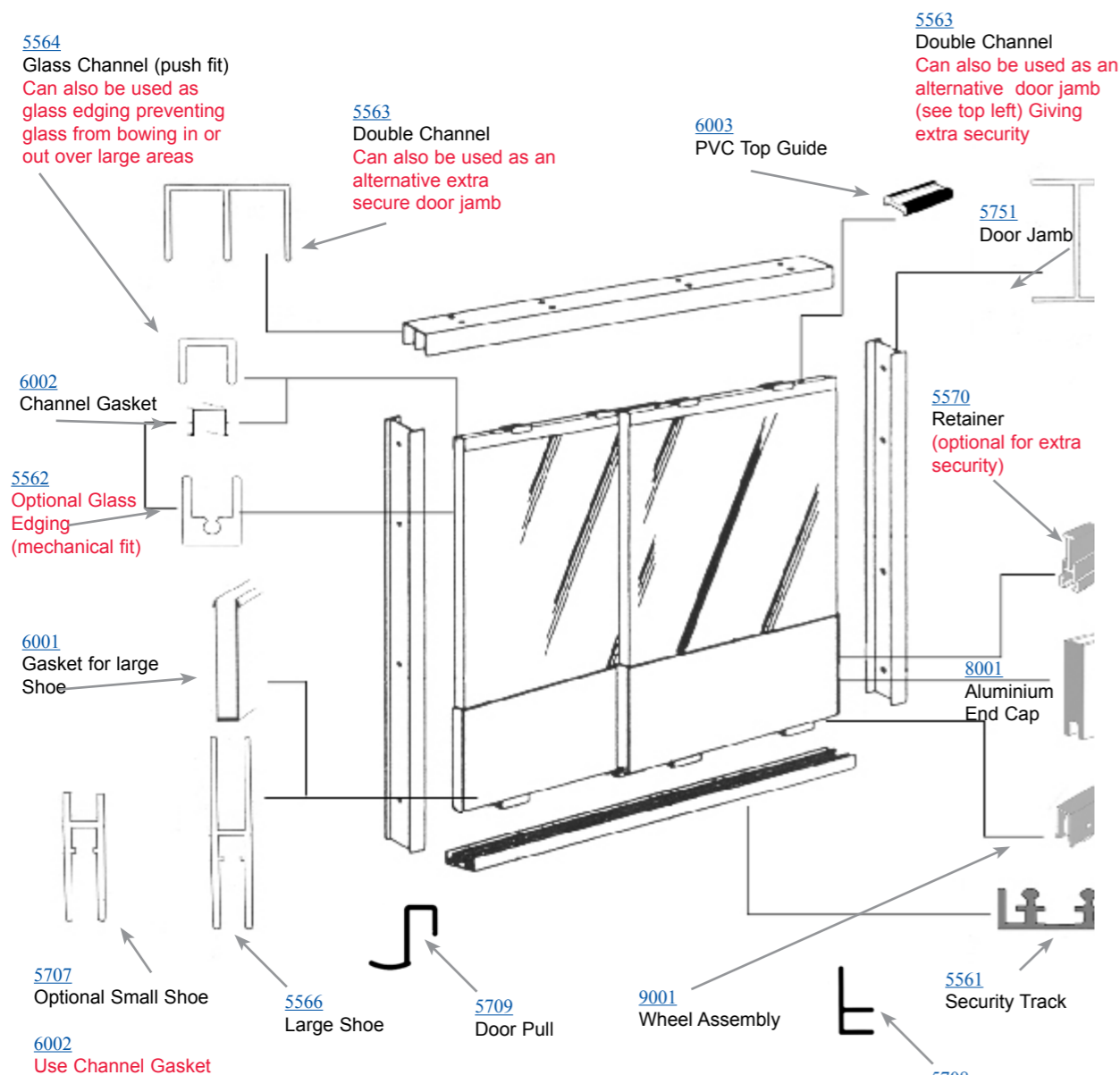




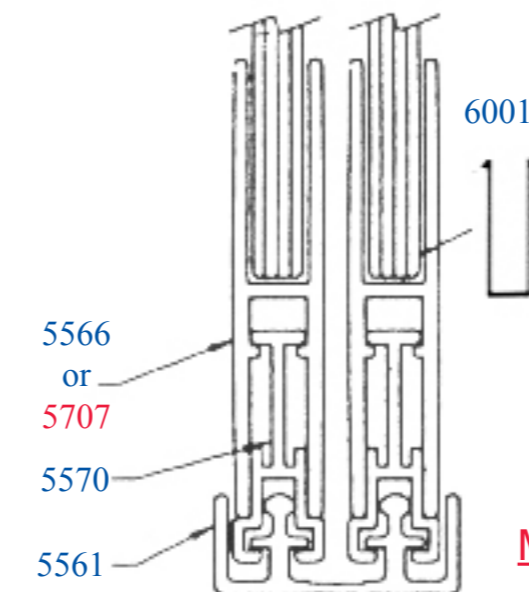
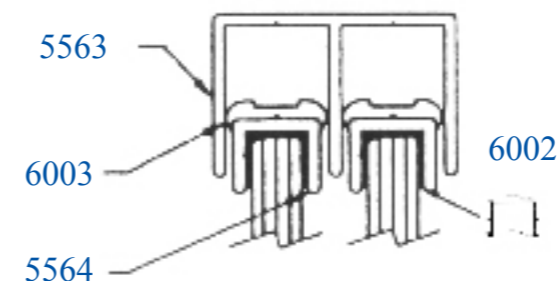
SecRol

(Security Rolling Door System)

A simple rolling door system for display cases with the ability of bringing HIGH SECURITY, to the case if it is required.



For further information and prices please contact:



Hardware Assembly	Panel Width	Panel Height
	W/O Door Centres and Side Verticals	Deduct 58.74 from overall opening height
	Add 34mm to overall opening width and divide by 2	
Overlap	26mm	

GENERAL INFORMATION
MAX. WEIGHT PER DOOR = 36Kg

NOTES:

ASSEMBLY INSTRUCTIONS:

(screws for steps 1—3 are customer Supplied)

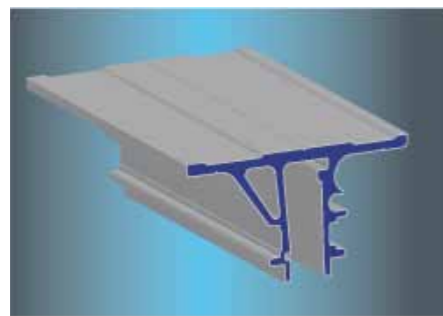
1. Attach 5751 or 5563 jambs to opening with screws.
2. Attach 5563 top channel to wood header.
3. Attach 5561 bottom track between jambs and fasten to base with screws.

ASSEMBLY OF ROLLING DOOR HARDWARE:

4. Fit 6002 top and 6001 bottom gasket to glass/panel.
5. Use rubber mallet to assemble mouldings to glazed glass. (be careful not to damage or move door retainers).
6. Insert end caps 8001 into position and tighten down screw inside to hold into place.
7. Insert doors into position.

Dimensional Drawings can be found on our WEB site: www.d-i-a.net

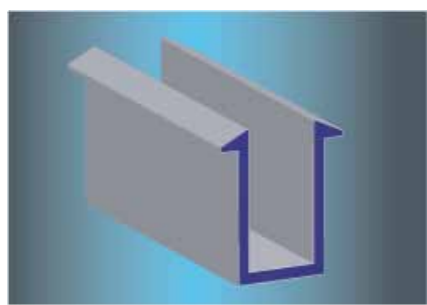
Other Glass Sections



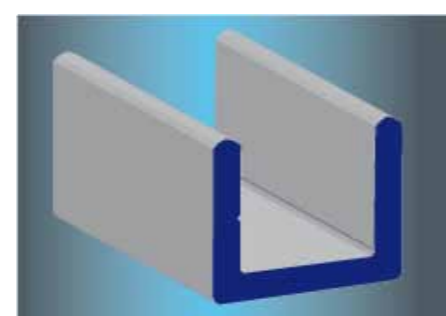
FGSH14x74-3750
"10mm glass shelf holder Etched"



F5590-3700
"H" Section with 9mm channel"

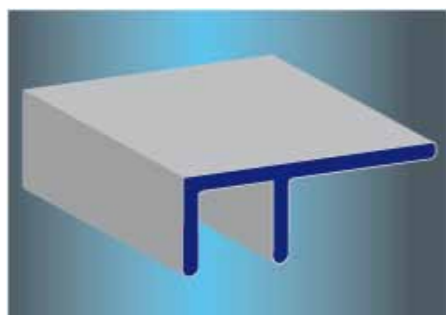


FUG12P/C/Nat-3100
"Winged"U"Channel12.5mmGapPolished"



F5564-3100
"6mm "U" Channel 1.52 gauge"

Channels for 6mm glass Matching gasket available by the metre

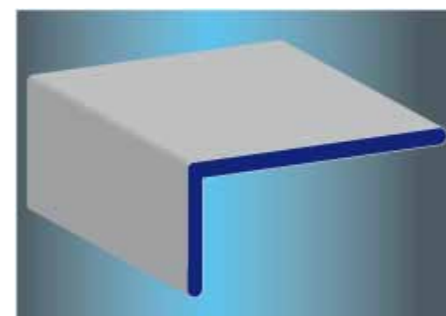


F5708-3100
"F" Section7.6mmChannelShelEdge"

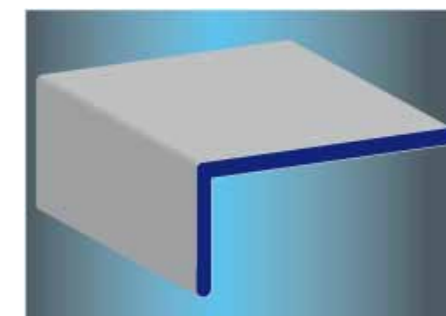


F5265-3100
"90 Degree Ext Corner for 6mm Glass"

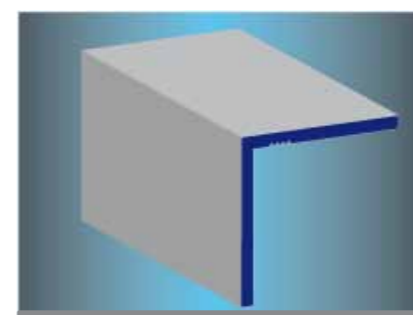
Anodised Standard Sections



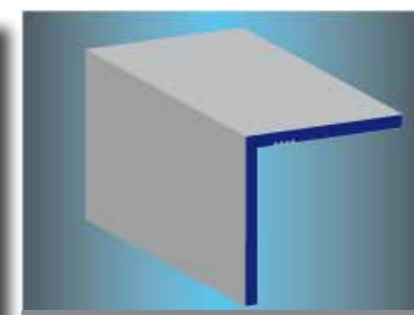
F5565-3100
"UneqaulAngle16x8mm1.6mmGauge"



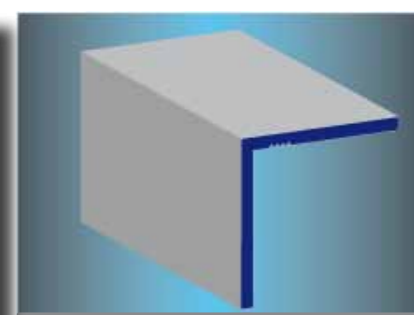
F1343-3100
"UnequalAngle25x12.5mm1.2mmgauge"



F2685-3100
"EqualAngle16x16mm1.2mmGauge"

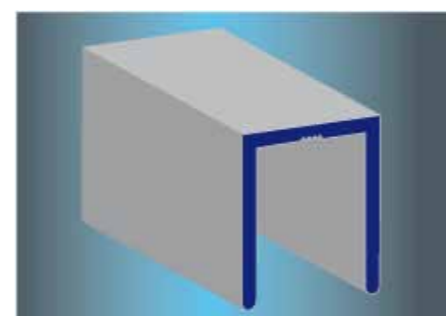


F1046-3100
"EqualAngle19x19mm1.5mmgauge"

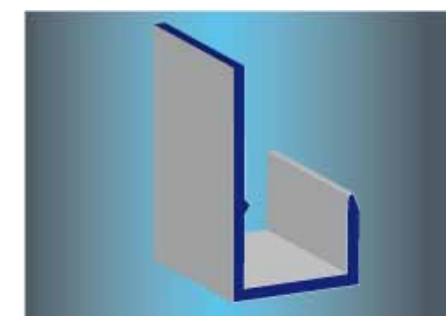


F1060-3100
"EqualAngle25x25mm1.5gauge"

Dimensional Drawings can be found on our WEB site: www.d-i-a.net



F4540-3100
"U" Channel for 10mm glass "



F6405-3100
"J"Section16mmChnl40Back,20front"